



WORLD'S BEST
ALLOY BULLBARS

East Coast Bullbars (ECB Pty Ltd)

Tel: 07 3897 5700

Fax: 07 3283 1168

ecb@ecb.com.au www.ecb.com.au

29 Snook St
Clontarf QLD 4019
Australia

Po Box 122
Margate QLD 4019
Australia

BC52SY

REPLACES: 15.02.10
REVISED: 09.07.10

FITTING INSTRUCTIONS

CHEVEROLET SILVERADO 2007-MY10 BIG TUBE™ BAR (WITH FOG LAMPS) VEHICLE FRONTAL PROTECTION SYSTEM (VFPS) FOR AIR BAG & ADR COMPLIANT VEHICLES

Check installation hardware before commencing.

1. Lift bonnet
2. Remove grille to radiator support cover, eight push pull plastic clips.
3. From air opening on bumper, disconnect air damming from front bumper. (Five plastic Christmas tree plugs.)
4. From under bumper, remove bumper stays. One 15mm nut (per side) from bumper end and two 15mm bolts (per side) from chassis end. **See figure 1.** Disconnect fog lights.
5. Remove two 21mm bolts from bumper brackets. Access from behind grille. **See figure 2.**
6. Remove bumper from vehicle.
7. Remove bumper brackets from front of chassis rails (two 21mm nuts on factory “u” bolts) and one 19mm bolt and nut from tow hook. **Note:** It may be necessary to loosen the 19mm anti twist bolt on the underside of the chassis first.
8. Fit ECB Steel mount brackets to outside of chassis rails using three ½ x 4 ½ bolts, flat washers, spring washers and nuts. **See figure 3. Finger tighten only.**
9. Splice ECB indicator/park light and fog light wiring into original wiring loome. Use cable locks (supplied). Wiring is accessible under headlamps. If fog lamps not fitted, an accessory wiring kit will be required. **See figure 4.**
10. Attach infill trim (supplied) to top sides of ECB Protection Bar as far as the cut out for the grille opening. Trim infill to suit rear angle of bar. Attach 6mm clip lock trim neatly between infill trim. **See figures 5a and 5b.**
11. Fit ECB LED indicator / park lights (supplied) into protection bar as per instructions supplied with the LED indicator kit. **NOTE: Ensure park light is to outside. See figure 6.**
12. Attach ECB fog lights to protection bar. Place M6 x 20 bolts, spring washers (supplied) through light mount from inside and attach nut to top. Slide assembly into light mount in Protection bar and centralize light to hole. **See figure 7. Tighten Firm Only. NOTE: Do not fit ECB light trims to protection bar at this point.**
13. Attach ECB Protection Bar to outside of steel mounting brackets. Use three ½ x 1 ½ bolts, flat washers, spring washers and nuts (per side). **Finger tighten only.**
14. Push steel mounting brackets as high as possible for alloy bar. **Tighten** steel mounting bolts and anti twist bolt on underside of chassis to tow hook.
15. Align ECB Protection Bar to vehicle. **Tighten all bolts. See figures 8 and 9.**



**WORLD'S BEST
ALLOY BULLBARS**

East Coast Bullbars (ECB Pty Ltd)

Tel: 07 3897 5700

Fax: 07 3283 1168

ecb@ecb.com.au www.ecb.com.au

29 Snook St
Clontarf QLD 4019
Australia

Po Box 122
Margate QLD 4019
Australia

16. Connect ECB indicator/park light and fog lamp. Ensure wiring is routed in such a manner to avoid any sharp edges etc and fog lamps are pointed forward and at a slightly downward angle. Check for correct operation. Fit Fog light trims (supplied), large side to inside of bar.
17. Trim lower wheel arch splash guard level with bottom of skirt on Protection bar. Cuts will be required to allow splash guard to sit neatly behind Side of Protection Bar.

ENSURE NUMBER PLATE IS CLEARLY VISABLE

Note: When fitting/refitting the licence plate to the vehicle, ensure there is no obstruction to licence plate vision in accordance with local authorities. If required relocate licence plate to an alternate location.

Further VFPS Notes:

- a) Do not attach VFPS to the vehicle using anchorages not intended for this purpose (e.g. engine mounting bolts).
- b) Do not use this product for any vehicle make or model, other than those specified by the VFPS manufacturer.
- c) Do not remove the plaque or label from the VFPS.
- d) Do not modify the structure of the VFPS in any way.
- e) No accessory or fitment should project forward of the VFPS forward profile.
- f) **ENSURE THESE INSTRUCTIONS ARE LEFT WITH VEHICLE OWNER AND/OR OPERATOR.**

IMPORTANT INFORMATION

Periodically check bolts and nuts for correct tightness, especially if travelling on rough roads

FITTING KIT

2 – ECB Steel Mounting Brackets	1 – ECB LED Indicator / Park light kit
6 – ½ x 4 ½ bolts	1 – Pair ECB Fog Lamps.
6 – ½ x 1 ½ bolts	2 – Fog lamp surrounds.
24 – ½ flat washers	2 – M6 x 20 bolts.
12 – ½ spring washers	2 – M6 flat washers.
12 – ½ nuts	2 – M6 spring washers.
1 – 1600mm length, 6mm clip lock trim.	2 – M6 nuts
2 – 600mm length, infill trim	10 – Cable locks



WORLD'S BEST
ALLOY BULLBARS

East Coast Bullbars (ECB Pty Ltd)

Tel: 07 3897 5700

Fax: 07 3283 1168

ecb@ecb.com.au www.ecb.com.au

29 Snook St
Clontarf QLD 4019

Australia

Po Box 122
Margate QLD 4019

Australia

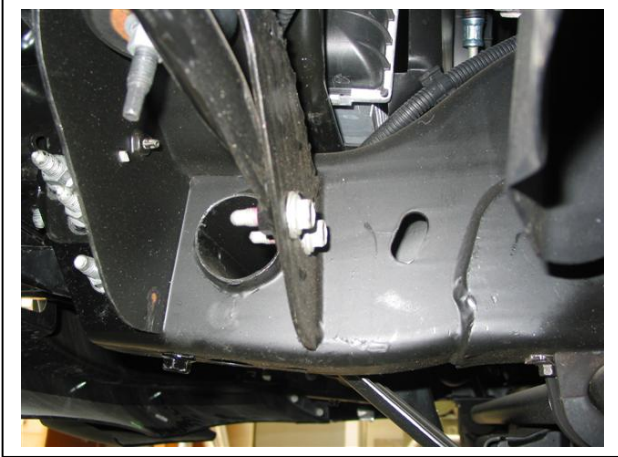


Figure 1: Stay mount to chassis, two 15mm bolts

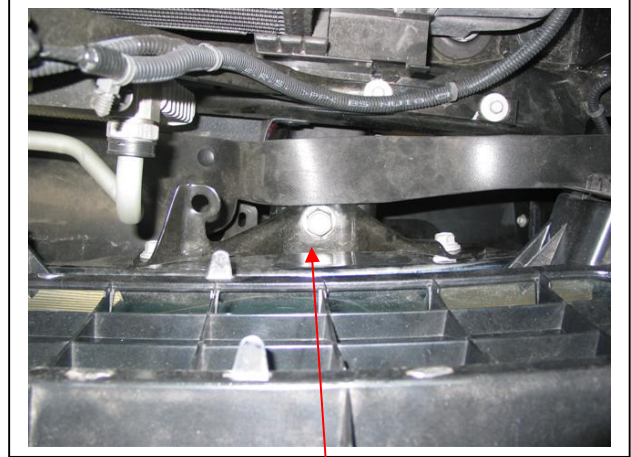


Figure 2: 21mm bolt looking down from behind grille



Figure 3: Drivers side steel mounting bracket fitted

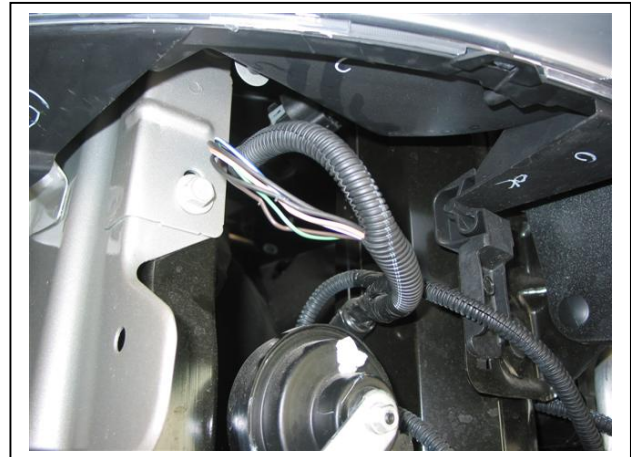


Figure 4: Wiring harness under driver's headlamp



Figure 5a: infill trim cut point on bumper, fitted in picture.



Figure 5b: Overall view, rear of alloy bar



**WORLD'S BEST
ALLOY BULLBARS**

East Coast Bullbars (ECB Pty Ltd)

Tel: 07 3897 5700

Fax: 07 3283 1168

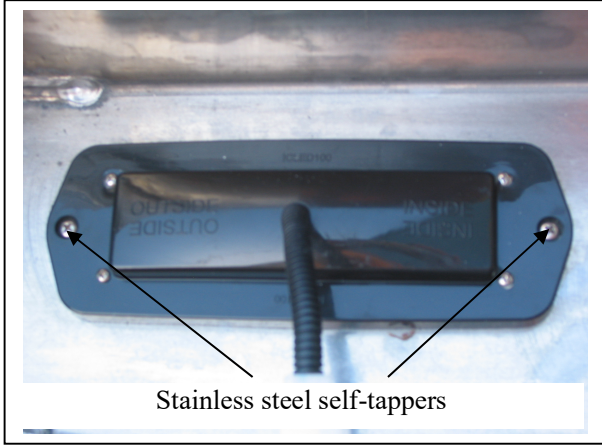
ecb@ecb.com.au www.ecb.com.au

29 Snook St
Clontarf QLD 4019

Australia

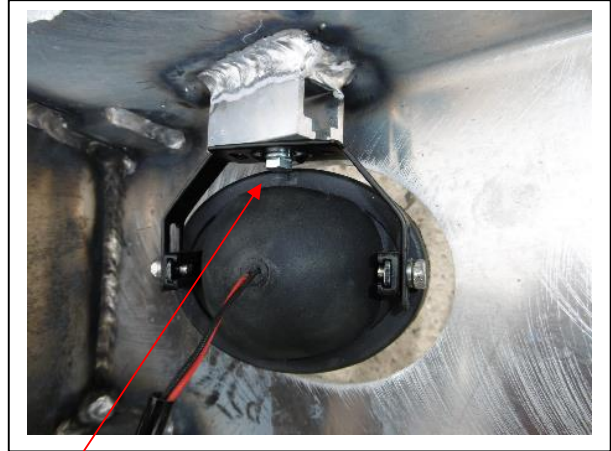
Po Box 122
Margate QLD 4019

Australia



Stainless steel self-tappers

Figure 6



M6 bolt

Figure 7



Figure 8: Big Tube™ Bar, front view



Figure 9: Big Tube™ Bar, side view



**WORLD'S BEST
ALLOY BULLBARS**

East Coast Bullbars (ECB Pty Ltd)

Tel: 07 3897 5700

Fax: 07 3283 1168

ecb@ecb.com.au www.ecb.com.au

29 Snook St
Clontarf QLD 4019
Australia

Po Box 122
Margate QLD 4019
Australia

We value your comments

Dear Fitter,

ECB would like to know how you went with the installation of this product. We value your comment and may need to contact you to clarify some details so please complete your contact details clearly.

We would appreciate if you could complete as many of the following details as possible.

Your Name:	Your contact No.
Product Part No.	Product Invoice No.
Product Description:	Make, model, and year of vehicle:
Product Work Order No.	Company your from/Company product purchased from:

Date of Fitment: ___/___/___

Was the fitting hardware supplied complete? Yes No

If no what was not supplied

Did the installation go well? Yes No

Please provide comments

Please draw diagrams if you need to.

Post to
Reply Paid 122
PO Box 122
Margate QLD 4019

Fax to
(07) 3283 1168



**WORLD'S BEST
ALLOY BULLBARS**

East Coast Bullbars (ECB Pty Ltd)

Tel: 07 3897 5700

Fax: 07 3283 1168

ecb@ecb.com.au www.ecb.com.au

29 Snook St
Clontarf QLD 4019
Australia

Po Box 122
Margate QLD 4019
Australia



WORLD'S BEST ALLOY BULLBARS

East Coast Bullbars (ECB Pty Ltd)

Tel: 07 3897 5700

Fax: 07 3283 1168

ecb@ecb.com.au www.ecb.com.au

29 Snook St
Clontarf QLD 4019
Australia

Po Box 122
Margate QLD 4019
Australia

DESPATCH CHECKLIST BC52SY

ICZBKCC52



Work Order #	
Finish:	
Transport:	
Due Date:	

- 2 – ECB Steel mounting brackets.
- 1 – Bolt Kit.
- 1 – ECB LED Indicator / Park light kit.
- 1 – Pair ECB fog lamps.
- 2 – Fog lamp surrounds.
- 1 – 1600mm length 6mm clip lock.
- 2 – 600mm length infill trim.
- 2 – ECB overrides – **Fitted to bar.**
- 8 – 6mm air scoops – **Fitted to bar.**

See other side of this page for photos of all mounts



Is this product “the best it can be” Yes _____ / _____
Wrapper's initials / Checker initials
 If NO fix before continuing

All parts checked and completed by:

Nut and bolts: _____ Date __ / __ / __

Order control: _____ Date __ / __ / __

Final wrap check: _____ Date __ / __ / __



**WORLD'S BEST
ALLOY BULLBARS**

East Coast Bullbars (ECB Pty Ltd)

Tel: 07 3897 5700

Fax: 07 3283 1168

ecb@ecb.com.au www.ecb.com.au

29 Snook St
Clontarf QLD 4019
Australia

Po Box 122
Margate QLD 4019
Australia

